

WTU Update

Volume 26, Issue 3

December 2017

FROM THE PRESIDENT'S DESK



At a WTU Special General Membership Meeting on November 21, 2017 at Toll Gate High School, the WTU Membership ratified two collective bargaining agreements (CBAs): a 2015-2017 CBA and a 2017-2020 CBA. The CBAs are a result of a lengthy negotiations/mediation process that began in June 2015, after the WTU had sent the Warwick School Committee a letter to attempt to begin negotiations in December 2014. The WSC voted for both of the CBAs at its meeting on November 14, 2017. Therefore, the WTU now has a successor CBA. The WTU and the WSC will now proofread the CBAs before they are printed.

The two CBAs provide the following salary increases:

Salary Increases

Appendix A-1

2016-2017: 2% eff. 3.1.2017
 2017-2018: 3% eff. 10.1.2017
 2018-2019: 3%
 2019-2020: 3%

Appendix A-2 Longevity:

2018-2019: 10%
 2019-2020: 10%

Appendix B-1 and B-2:

2018-2019: 3%
 2019-2020: 3%

The retro payments and the new pay rates for each step are as follows:

Retro Payments Breakdown

<u>Step</u>	<u>3/1/17 Retro</u>
1	422.54
2	465.97
3	501.68
4	537.39
5	573.15
6	608.81
7	647.81
8	680.31
9	709.51
10	779.33

Step **12/21/17 Pay Forward**

1	1,698.01
2	1,872.53
3	2,016.02
4	2,159.55
5	2,303.24
6	2,446.52
7	2,603.27
8	2,733.86
9	2,851.21
10	3131.80

Step **Fall 2017 Retro**

1	505.07
2	556.94
3	599.67
4	642.33
5	685.06
6	727.72
7	774.36
8	813.18
9	848.11
10	931.54

The retro payments will be issued in separate checks/direct deposits to maintain visibility for salary/pension tracking purposes. The go forward rate will take effect on the pay-run of December 21, 2017.

NOTICE OF MEETING

WTU MEMBERSHIP MEETING

DATE: DECEMBER 6, 2017
TIME: 3:30 P.M.
PLACE: WINMAN AUDITORIUM

AGENDA

- I. Call to Order**
- II. Secretary's Report**
- III. Treasurer's Report**
- IV. President's Report**
 - A. Grievances/Arbitrations**
 - B. United Way**
- V. Old Business**
- VI. New Business**
- VII. Adjournment**



**WTU BUILDING REP
ELECTION RESULTS**

At the November 8, 2017 building reps meeting, the following elections took place:

Elected to Executive Board

**Elementary Rep:
Cynthia Bowden**

**Secondary Rep:
Domenic Bonaminio**

**Special Area Rep:
Janet Goes**

**Special Ed/ Services:
Meredith McSwiggan**

Elected to Fair Rep Comm.

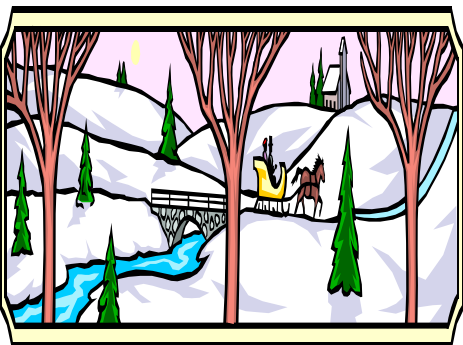
**Elementary Rep:
Jonathan Lautieri**

**Secondary Rep:
Julie Connors-Costello**

**Special Area Rep:
Brian Flynn**

**Special Ed/Services:
Natalie Potvin**

**Appointed-At large:
Michael Pierce**



**CHANGE OF
ADDRESS**

Have you moved recently? Do you have a new telephone number? If so, it is important that you call the Union office as soon as possible. We are updating all our bargaining unit information (names, addresses, telephone numbers, e-mail addresses, school locations, etc.), and it is important that we have accurate information so that we can communicate with you, if necessary, by mail, e-mail, and by telephone.

COASTLINE NEWS

401-732-9444

www.coastlineap.com

****Managing the Holidays****

The COASTLINE staff members know that the holidays can be emotionally charged for many people. They are available to help. Here are a few suggestions to aid you in managing the holiday rush:

- * Sit back and remind yourself of what is important to you...is this a time for family togetherness, socializing, religious practice... all of the above?
- * Keep your expectations realistic. It does not have to be the "best ever."
- * Keep difficult people or relatives in proper perspective. Your holiday time with them is limited.
- * Practice assertiveness. It may be necessary to say "NO" to some invitations and requests.
- * Be aware of your stress level. Practice stress management skills, including pacing yourself by limiting parties or events and time away from home.

PLEASE NOTE



Dec. 6- General Membership Meeting-Winman

Dec. 12- School Committee Meeting

**Dec. 20 -Executive Board Meeting
3:30 p.m.**

Dec. 25 - Office Closed

Jan. 2 - Office Open

WTU FAX NO. 739-2287 WTU PHONE NO. 739-2260

**WEBSITE:
warwickteachersunion.org**

**WTU
EXECUTIVE BOARD**

President	Darlene Netcoh
V.P. Secondary	Michael Costello
V.P. Elementary	Karen Monteiro
Secretary	Diane Chaplin
Treasurer	David Croll
Asst. Treasurer	Scott Daigle
Sp. Services Rep	Meredith McSwiggan
Sec. Rep	Domenic Bonaminio
Elem. Rep	Cindy Bowden
Itinerant Rep	Janet Goes

WTU Update is a publication of the Warwick Teachers Union, Local 915, AFT, RIFTHP, AFL-CIO